

# PT130E Electric Drive

## High Efficiency Wellpoint Dewatering Pump

Max. 35 m<sup>3</sup>/hour, Max. 20 mwc



### Pump specifications:

Type.....PT130E  
 Design.....Double acting, duplex piston pump  
 Max. flow .....35 m<sup>3</sup>/hour (154 US GPM)  
 Max. pressure .....20 mwc (66 ft.)  
 Max. suction lift.....9.6 mwc (32 ft.)  
 Connections.....4"  
 Electric motor.....3 kW (4 Hp)  
 Voltage .....230/400V IE2  
 Base frame .....Hot dip galvanised  
 Weight (net) .....575 kg (1265 lb.)

## FEATURES

### PT Wellpoint pump

The PT wellpoint pump has been designed for vertical- and horizontal dewatering applications. These positive displacement pumps are fully self-priming and are capable of handling air, water or any mixture of both without requiring a separate priming system. Furthermore, these pumps are capable of running dry indefinitely without causing damage or excessive wear to any part of the unit.

### World-class performance

The PT pump package offers lowest cost of ownership and provides a reliable and durable solution to the challenges facing dewatering companies around the world. The technology has been tried and tested in the field and has revolutionised the vertical- and horizontal dewatering market on a global scale, by offering unmatched performance at minimal costs thereby improving the return on investment (ROI).

### Key features PT Pumps

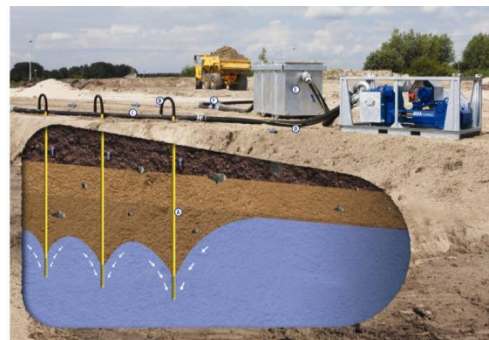
- Self-priming, no additional priming system required
- Excellent suction capabilities on all flows
- High pump efficiency
- Minimal power consumption reducing running costs
- Can run dry indefinitely
- Cheap and easy-to-replace wear parts
- 100% mechanical technology
- Extended unit life time

### Complete package designed & built by BBA Pumps

- Complete in-house design & production
- Over 60 years of experience in the market
- Extensive testing facility in-house
- Contemporary & functional design
- Durable & eco-friendly materials

### After sales service & product support

- Single supplier for parts, spares & accessories
- Dedicated customer help-desk (24h service)
- Dedicated service department in-house
- Global parts distribution network
- Optional global on-site servicing
- Extensive training options available (technical & commercial), on-site or in-house



# PT130E Electric Drive

## High Efficiency Wellpoint Dewatering Pump

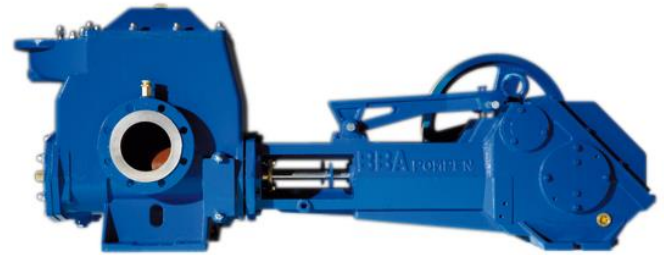
Max. 35 m<sup>3</sup>/hour, Max. 20 mwc



### STANDARD TECHNICAL SPECIFICATIONS

#### BBA double action piston pump

Pump type.....	PT130
Max. flow.....	35 m <sup>3</sup> /hour (154 US GPM)
Max. head.....	20 mwc (66 feet)
Max. suction lift.....	9.6 mwc (32 ft.)
Speed .....	62 strokes/min
Pump casing.....	Cast iron GG20
Pump cover.....	Cast iron GG20
Cylinder liners.....	Stainless steel 1.4301
Piston cups.....	Leather
Piston rods.....	Stainless steel 304
Shaft seal.....	Gland packing
Valve rubbers.....	NBR
Stone catcher.....	Steel hot dip galvanised
Measure equipment.....	Vacuum gauge
Connections.....	Steel hot dip galvanised



#### Electric motor

Motor type.....	HMA2
Power.....	3 kW (4 Hp)
Speed .....	1480 RPM
Voltage.....	230/400 V
Frequency.....	50 Hz
Poles.....	4
Mounting .....	B3
Protection.....	IP55
Efficiency .....	IE2
PKZ.....	Thermal overload protection



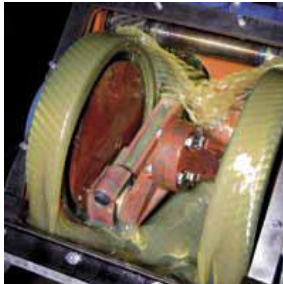
#### BBA base frame

Frame .....	Steel hot dip galvanised
Dimensions L x B x H .....	1500 x 700 x 1015 mm
Dimensions L x B x H .....	59 x 27.5 x 40 inch
Lifting point .....	Fitted with single lifting point
Forklift pockets.....	N/A
Motor rain cover.....	Steel hot dip galvanised
Belt guard .....	Steel hot dip galvanised

## PT130E Electric Drive

### High Efficiency Wellpoint Dewatering Pump

Max. 35 m<sup>3</sup>/hour, Max. 20 mwc



#### Lubrication and drive

Precisely machined drive gears and an automatic lubrication system provide excellent performance and minimal sound emissions.



#### Practical valve system

The valve system is fitted with an o-ring seal and a solid bridge section for securing purposes. This allows for quick and easy disassembly, even after prolonged use.



#### Easy access points

Allowing access to the cylinders, stuffing boxes and other critical areas for easy cleaning and maintenance.



#### Hard-wearing piston rods

The stainless steel piston rods have been carefully machined to provide an increased service life and minimal maintenance.



#### Exchangeable liners

The stainless steel cylinder liners can be rotated for extended service life. Fitted with a quick release system, rotating and exchanging the cylinders is simple even when servicing the pump in the field.



#### Standard stone catcher

All PT pumps feature a stone catcher protecting the pump internals from any suspended solids. The stone catcher has easy-access cleaning covers and comes with dual vacuum gauges to monitor pump performance.