

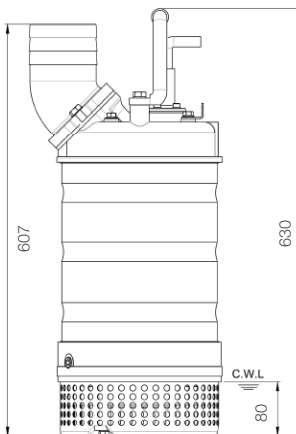
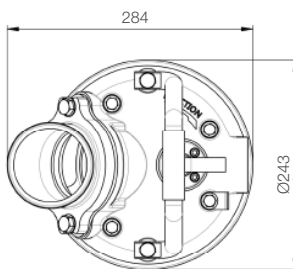
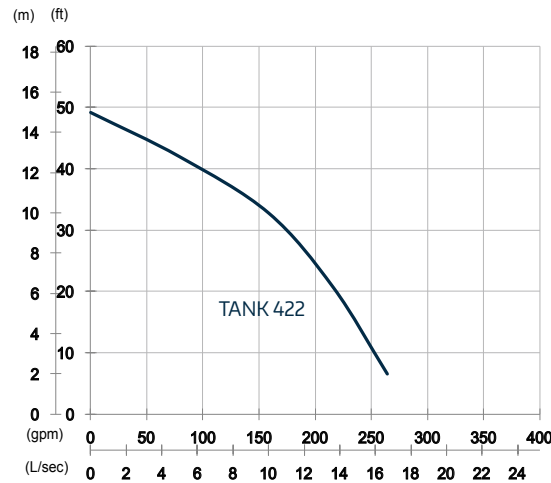
# Tank 422

## High Chrome Dewatering Pump 50HZ



### Pump specifications

OUTPUT	HEAD	FLOW
2.2kW	Rated : 10m	Rated : 10L/s
3HP	Max : 15m	Max : 16.7L/s
<b>SHAFT SPEED</b>		2850rpm
<b>OUTLET</b>		100mm
<b>SOLID PASSAGE</b>		9mm



unit : mm  
 Weight : 43kg

### Features

**Pump Type**  
 Electric Submersible Pumps  
 3-Phase

**Motor**  
 Type: Induction Motor  
 Poles: 2 Pole  
 Insulation: Class F  
 Protector: Circle Thermal Protector  
 Starter: D.O.L.

**Lubricant**  
 Food Grade (ISO VG32)

**Impeller Type**  
 Opened

**Shaft Seal**  
 Double Mechanical Seal  
 Silicon Carbide VS Ceramic / Carbon

**Bearings**  
 C3 Shielded ball bearings

**Cable**  
 PVC (CSA Certified) / H07BQ-F  
 10m or longer upon request

**Materials**  
 Pump Casing: Gray Iron  
 Impeller: Chromium Iron  
 Motor Frame: Stainless Steel  
 Motor Shaft: Stainless Steel  
 Strainer: Stainless Steel

**Max. Liquid Temperature**  
 40°C

**Max. Submersion Depth**  
 20m

**pH Range**  
 pH 5 - pH 8