

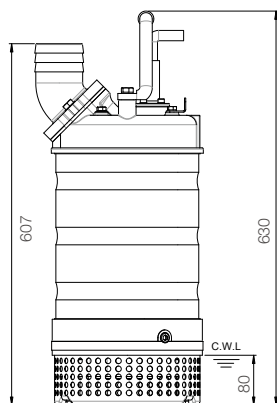
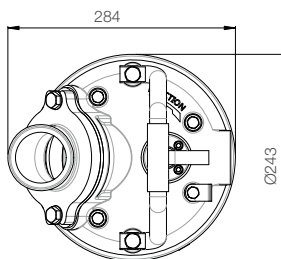
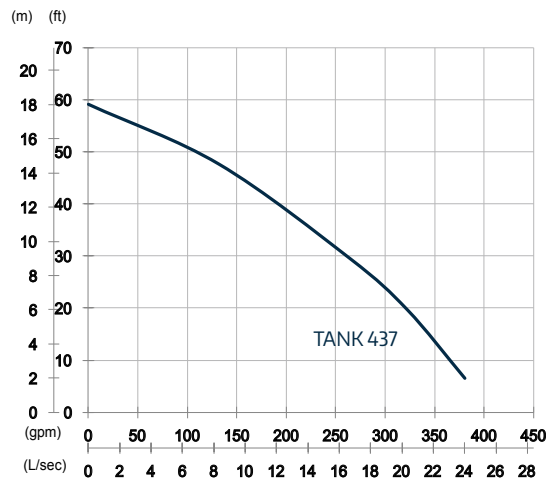
# Tank 437

## High Chrome Dewatering Pump 50HZ



### Pump specifications

OUTPUT	HEAD	FLOW
3.7kW	Rated : 9m	Rated : 16.7L/s
5HP	Max : 18m	Max : 24L/s
<b>SHAFT SPEED</b>		2850rpm
<b>OUTLET</b>		100mm
<b>SOLID PASSAGE</b>		9mm



unit : mm

Weight : 42kg

### Features

#### Pump Type

Electric Submersible Pumps  
 3-Phase

#### Motor

Type: Induction Motor  
 Poles: 2 Pole  
 Insulation: Class F  
 Protector: Circle Thermal Protector  
 Starter: D.O.L.

#### Lubricant

Food Grade (ISO VG32)

#### Impeller Type

Opened

#### Shaft Seal

Double Mechanical Seal  
 Silicon Carbide VS Ceramic / Carbon

#### Bearings

C3 Shielded ball bearings

#### Cable

PVC (CSA Certified) / H07BQ-F  
 10m or longer upon request

#### Materials

Pump Casing: Gray Iron  
 Impeller: Chromium Iron  
 Motor Frame: Stainless Steel  
 Motor Shaft: Stainless Steel  
 Strainer: Stainless Steel

#### Max. Liquid Temperature

40°C

#### Max. Submersion Depth

20m

#### pH Range

pH 5 - pH 8