



Vortex Submersible Pump

VX80T3.722

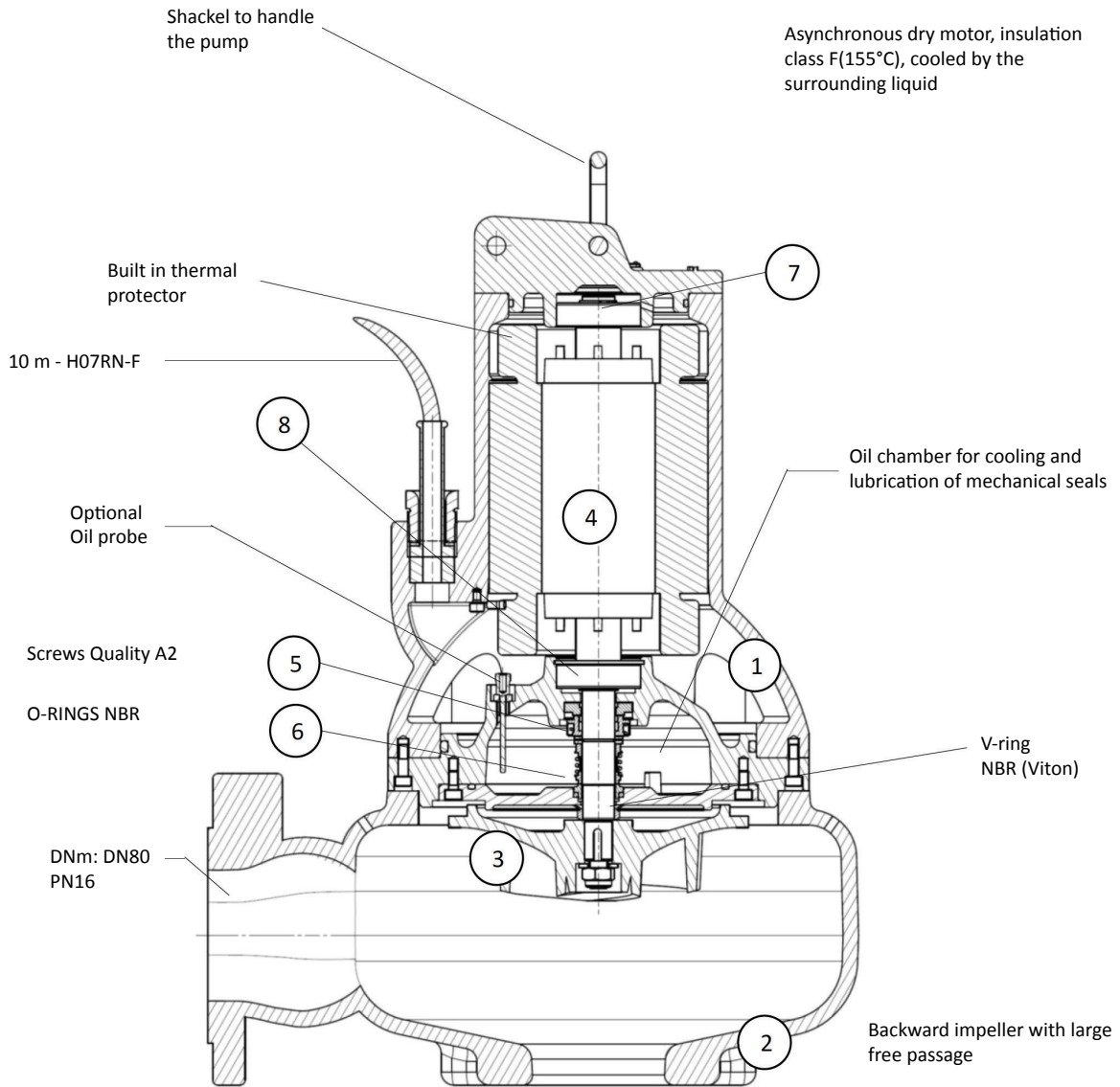


Vortex Submersible Pump

VX80T3.722



Construction features



No.	Description	Material
1	Motor group	Cast iron
2	Cover	Cast iron
3	Self cleaning propeller	Cast iron
4	Shaft	AISI 420B

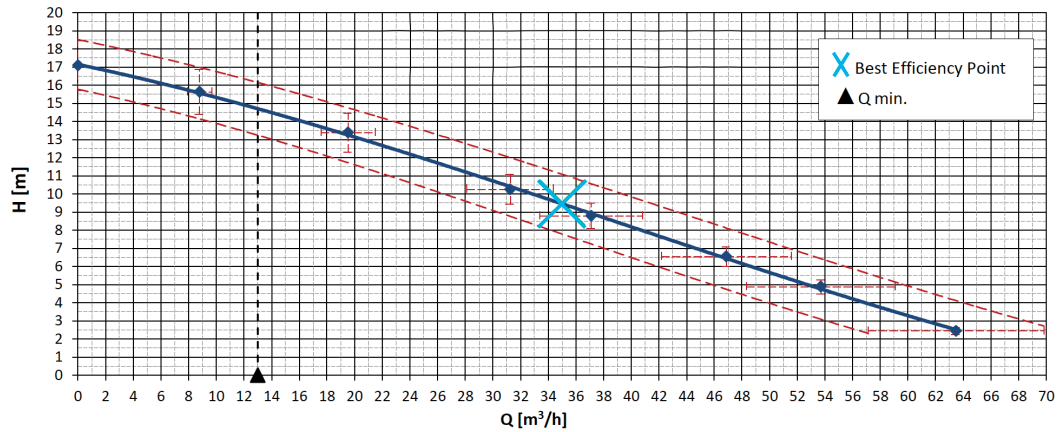
No.	Description	Material
5	Upper mech. seal	Carbon/Graphite/NBR
6	Lower mech. seal	SiC/SiC/NBR
7	Top bearing	6302-2RS
8	Lower bearing	6304-2RS

Vortex Submersible Pump

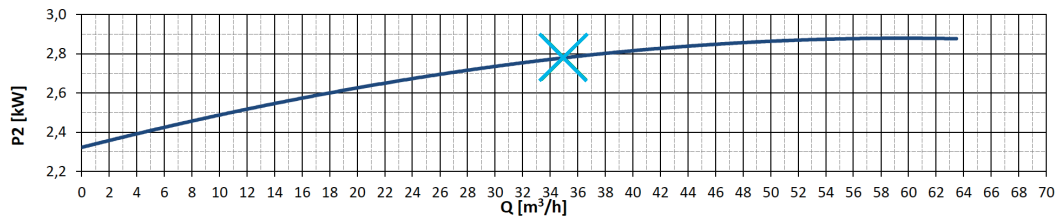
VX80T3.722



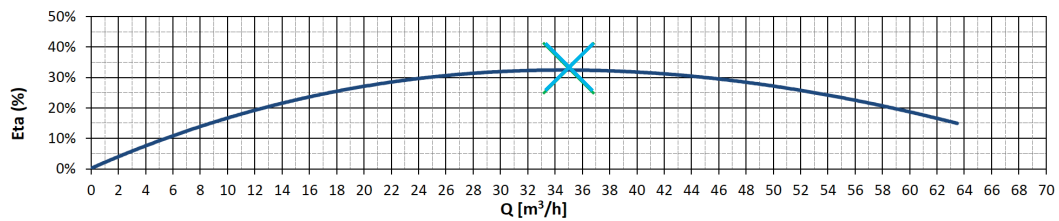
PERFORMANCE CURVE



SHAFT POWER



HYDRAULIC EFFICIENCY



FLOW (Q)	l/min	0,0	146,5	325,5	520,9	618,5	781,3	895,2	1058,0			
	l/s	0,0	2,4	5,4	8,7	10,3	13,0	14,9	17,6			
	m³/h	0,0	8,8	19,5	31,3	37,1	46,9	53,7	63,5			
HEAD (H)	m	17,1	15,6	13,4	10,3	8,8	6,5	4,9	2,4			

Specifications

Pump Type	VX80T	Discharge	80mm BSP	Humidity Probe	Yes
Code	VX80T3.722	Power Supply	3ph 400V - 50Hz	Cable Length	10m
Construction	Cast Iron	Nominal Speed	2900rpm	Max Flow	63.5m3/hr
Impeller Type	Vortex	Rated Motor Power	3.7kW	Max Head	17.1m
Weight	75kg	Starting Current	33A	Ingress Rating	IP68
Impeller diameter	168mm	Rated Current	6.6A		
Solids Passage	80mm	Thermal Protection	Yes		

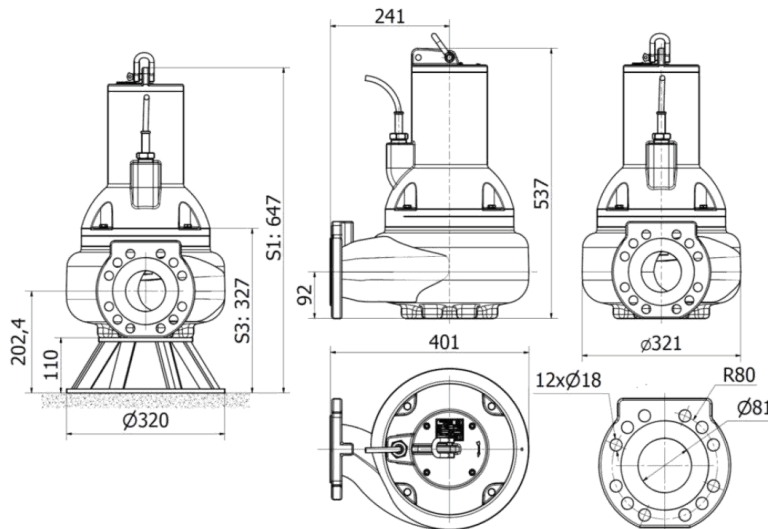
Vortex Submersible Pump

VX80T3.722

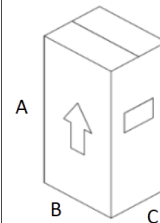


Dimensions and installation

S Installation mobile - Installation



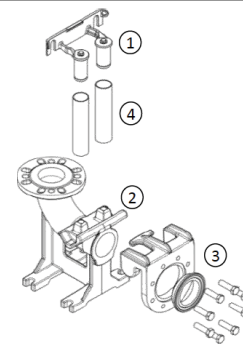
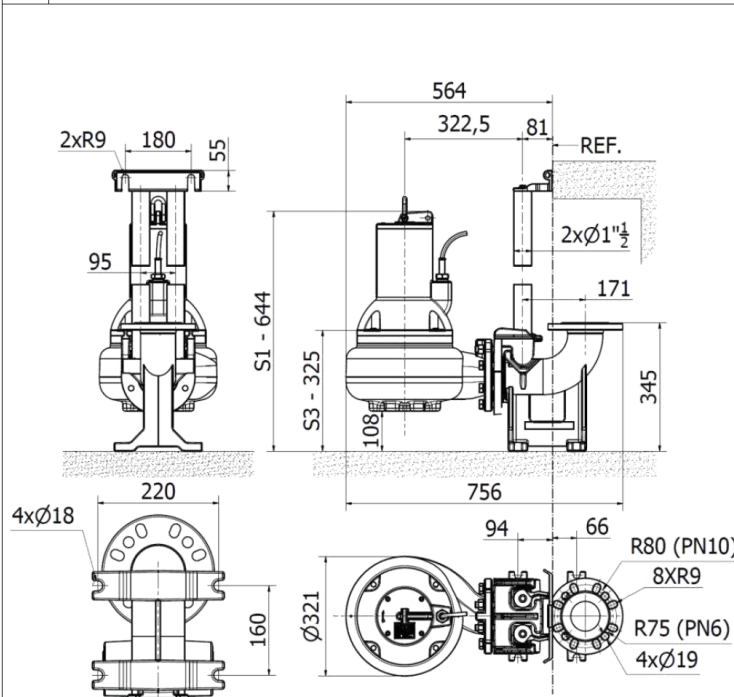
Packaging dimensions



Measures [mm]

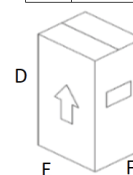
A	B	C
750	450	390

FC With foot coupling



8FC000004

- 1 1 1/2" guide rails bracket
- 2 Vertical foot - 3" out
- 3 Sliding bracket complete
- 4 Not supplied



D	550
E	600
F	400