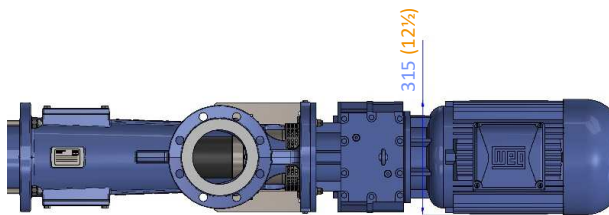
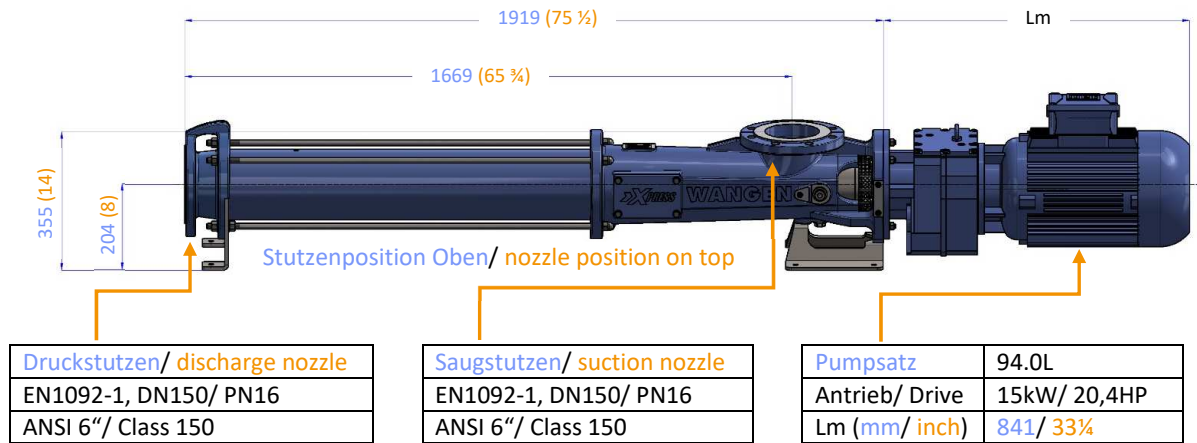


# Xpress 94

## Technical Data

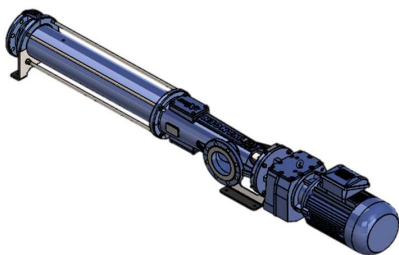


### Pumpenabmessungen / pump measurement



Bei den angegebenen Maßen ist die DIN ISO 2768-1v zu berücksichtigen/ According to DIN ISO 2768-1v on all dimensions

### Weitere Stutzenpositionen / further nozzle positions

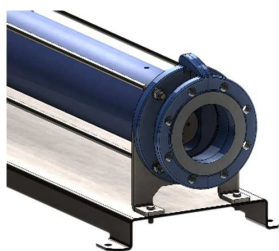


Stutzenposition links/ nozzle position left hand

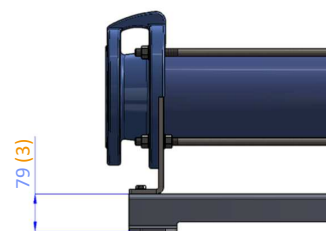


Stutzenposition rechts/ nozzle position right hand

### Optionen / options



Grundplatte/ base plate



Maß und Konstruktionsänderungen vorbehalten. Vereinfacht dargestellt, DIN34 beachten/ Subject to modification and amendments without notice. Schematic presentation. Notice DIN34