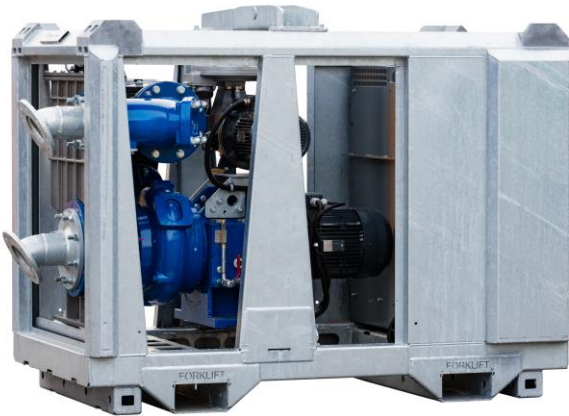


# BA100K Electrically Driven

## Sewage and Dewatering Pump

Max. 130 m<sup>3</sup>/hour, Max. 15 mwc



Stackable frame **BF10-18**

### Pump specifications:

Type.....	BA100K D193
Max. flow .....	130 m <sup>3</sup> /hour (572 US GPM)
Max. pressure .....	15 mwc (49 ft.)
Connections.....	DN100 (4")
Solids handling .....	82 mm (3,23")
Impeller type .....	Channel impeller
Priming system .....	BBA MP50
Electric motor.....	7.5 kW – 4 Pole
Voltage .....	400/690V
Motor control.....	See options page 4
Frame or canopy .....	BF10-18 or L10-18
Dry weight.....	1100 kg / 1200 kg

## FEATURES

### BA auto prime pump

The BA range of pumps has been designed with a clear focus on reliability, efficiency and durability. Featuring the 100% mechanical priming system, the BA series pumps quickly prime and re-prime, even from dry conditions. The heavy build style of both pump and canopy make the BA range perfect for use in the strenuous contractor market.

### World-class performance

The BA range is built to be deployed on the most demanding dewatering and sewage bypassing applications. Using high efficiency pumps and electric motors, the pumps offer maximum performance at minimal cost, fully in-sync with the company philosophy of "Lowest cost of ownership".

### Electric pumps in canopy

- Extremely low noise level
- Maximum safety while running
- Better resistant to vandalism
- More space for your branding
- Optimal weather protection
- Minimal ageing, therefore stable in value

### Complete package designed & built by BBA Pumps

- Complete in-house design & production
- Over 60 years of experience in the market
- Extensive testing facility in-house
- Contemporary & functional design
- Durable & eco-friendly materials
- Custom builds available

### After sales service & product support

- Single supplier for parts, spares & accessories
- Dedicated customer help-desk (24h service)
- Dedicated service department in-house
- Global parts distribution network
- Optional global on-site servicing
- Extensive training options available (technical & commercial), on-site or in-house



Canopy **L10-18**

# BA100K Electrically Driven

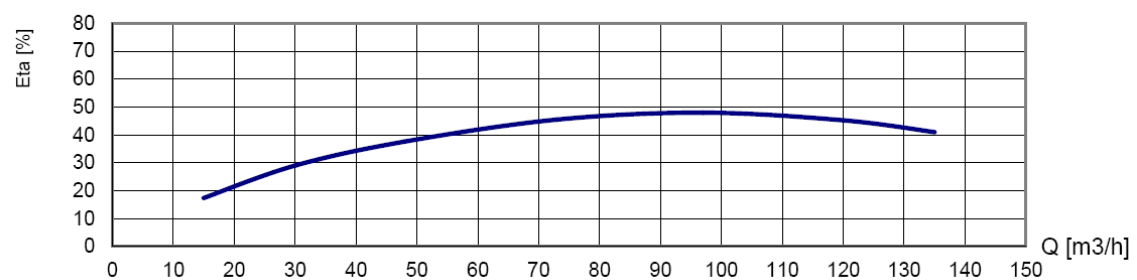
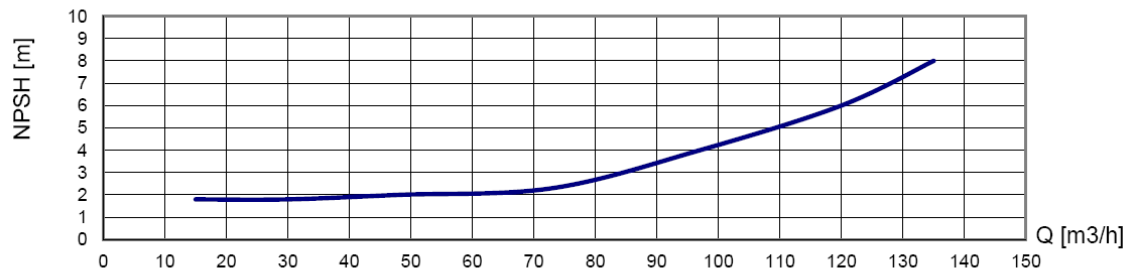
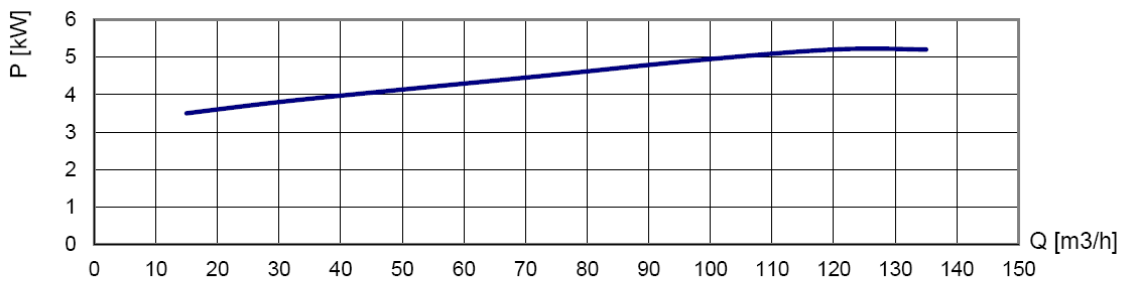
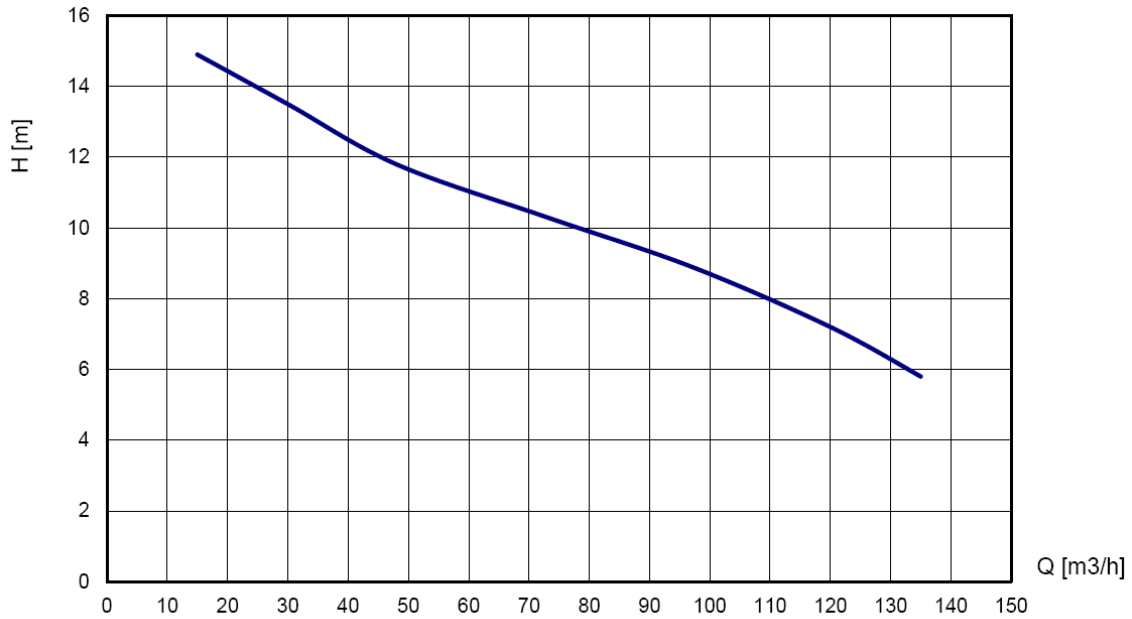
Sewage and Dewatering Pump

Max. 130 m<sup>3</sup>/hour, Max. 15 mwc



## PERFORMANCE CURVES (1465 RPM)

Continuous duty according ISO 9906



# BA100K Electrically Driven

## Sewage and Dewatering Pump

Max. 130 m<sup>3</sup>/hour, Max. 15 mwc



### STANDARD TECHNICAL SPECIFICATIONS

#### BBA auto prime pump

Pump type.....	BA100K D193
Max. flow.....	130 m <sup>3</sup> /hour (572 US GPM)
Max. head.....	15 mwc (49 feet)
Impeller type.....	Channel impeller
Solids handling.....	82 mm (3.23 inch)
Pump casing.....	Cast iron GG20
Impeller.....	Ductile iron GGG40
Pump shaft.....	C45
Shaft seal.....	Mechanical seal
Seal faces.....	Tung/Tung
Seal rubbers.....	Viton

#### BBA priming system

Pump type.....	BBA MP50 Diaphragm pump
Air handling capacity.....	50 m <sup>3</sup> /h (30 cfm)
Max. vacuum.....	8.5 m (29 Hg)
Drive.....	Electric motor 2.2kW - 400V
Start/stop.....	Fully automatic
Float box.....	Aluminium
Non return valve.....	Cast iron GG25
Check valve disc.....	Buna-N

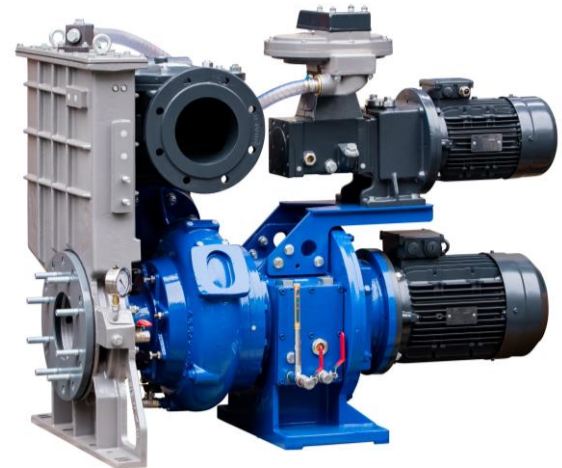
#### Electric motor

Motor brand.....	Hoyer
Motor type.....	HMA3 132M-4
Power kW (Hp).....	7.5 kW
Rated Voltage.....	400/690V 50Hz
Current (I nom.).....	14.5 Amp
4-pole.....	1460 RPM
Efficiency.....	90.7%
IE3.....	EC Directive 2005/32

#### BBA stackable frame and canopy

Frame.....	Steel hot dip galvanized
Dimensions L x W x H.....	1800 x 1040 x 1405 mm
Dimensions L x W x H.....	71 x 41 x 55,3 inch
Lifting point.....	Fitted with single lifting point
Forklift pockets.....	Fitted with 2 forklift pockets
Stackable.....	Frame and canopy are stackable
Control panel.....	Softstarter (other options see page 4)

All electrical components **safe** and **dry** behind a lockable door.



# BA100K Electrically Driven

Sewage and Dewatering Pump

Max. 130 m<sup>3</sup>/hour, Max. 15 mwc




## MOTOR CONTROLS (configurable)

Mobile electric pumps in stackable frames or sound attenuated canopies are equipped with a lockable compartment. This is where the electrical components – such as the motor control – are mounted safely and dry. Configure your pump unit with one of the motor controls listed below.


### DOL

<p><b>Direct On Line</b></p>	<p>With <b>DOL</b> delivery, the electric BBA pump unit is supplied bare without a lockable compartment or motor control. To prevent pump damage, the user must ensure a proper motor start method.</p>
------------------------------	---


### BASIC

<p><b>Star-Delta</b></p>	<p>With <b>Basic</b> delivery, the electric BBA pump unit is supplied with a star-delta switch. This is only possible for pumps with a motor power up to 30 kW and sufficient available electrical power due to peak current during start-up. (The vacuum pump always runs together with the main pump)</p>	
--------------------------	---	--

### STANDARD

<p><b>Soft Starter</b></p> <p><i>Most popular</i></p>	<p>The <b>Standard</b> package is the most popular; the BBA electric pump unit is fitted with a soft starter. This motor control ensures a smooth start with constant acceleration, reduces starting current and avoids unnecessary mechanical stress on the pump. Another advantage is the linear stop, which prevents pump damage due to water hammer.</p>	
---	--	---

### VFD

<p><b>Variable Frequency Drive</b></p>	<p>With the <b>VFD</b> model, the electrical BBA pump unit is equipped with a Variable Frequency Drive. This allows you to regulate the water flow and pressure by adapting the motor speed. In addition to energy savings, variable frequency drives offer many features and optimum pump protection. The unit is also equipped with a more powerful motor so that the pump can run up to 60 Hz.</p>	
--	---	---

	DOL	BASIC	STANDARD	VFD
Automatic level control	X	X	✓	✓
PTC thermal protection	X	X	✓	✓
Direction of rotation / phase loss protection	X	✓	✓	✓
Hour counter / malfunction lamp / switch	X	✓	✓	✓
Emergency stop according to 'SIL 2'	X	✓	✓	✓
Vacuum pump automatic on/off	X	X	✓	✓
Multilingual display	X	X	✓	✓

Discuss other specific options with your account manager or BBA Pumps distributor.

# BA100K Electrically Driven

Sewage and Dewatering Pump

Max. 130 m<sup>3</sup>/hour, Max. 15 mwc



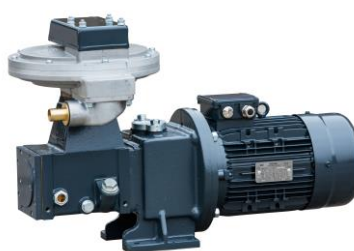
**Channel impeller**  
GGG40 channel impeller, ductile iron, solids handling 82 mm.



**Large inspection covers**  
Easy access to float box, impeller and non-return valve.



**Easy inspection**  
Oil glasses, drain valves and fill plugs are all easily accessible.



**Priming system**  
Diaphragm pump, air-cooled, water-resistant and oil-spillage free. Air capacity of 50 m<sup>3</sup> per hour.



**4 Year limited warranty**  
The BBA limited warranty covers years or operating hours whichever occurs first. For more details please consult the BBA warranty book.



**User Manual BA series**  
Extensive user manual with important information concerning the pump unit, pump installation and safety warnings. Available in several languages.