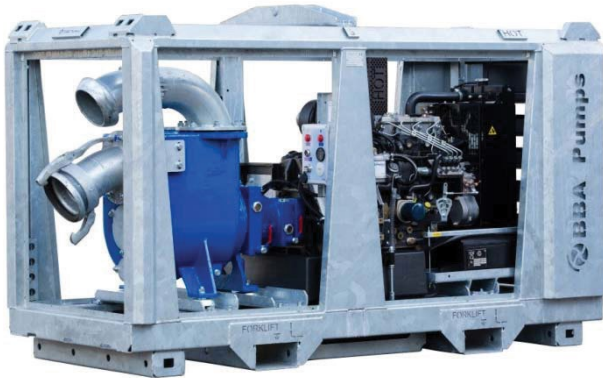


# BE160 Diesel Driven

## Self-Priming Centrifugal Pump

Max. 345 m<sup>3</sup>/hour, Max. 27 mwc



### Pump specifications:

<b>Type</b>	BE160 D254
<b>Max. flow</b>	345 m <sup>3</sup> /hour (1518 US GPM)
<b>Max. pressure</b>	27 mwc (89 ft.)
<b>Connections</b>	DN 150 (6")
<b>Solids handling</b>	80 mm (3,15")
<b>Impeller type</b>	Semi-open impeller
<b>Engine</b>	Perkins 404D-22
<b>Basic frame</b>	BF10-23
<b>Weight (net)</b>	1220 kg (2684 lb.)

## FEATURES

### B(E) self priming centrifugal pump

The B range of pumps have been designed with a clear focus on reliability, efficiency and durability, ranging from 1-1/2" to 12". Featuring an open impeller configuration in combination with a changeable wear plate, facilitating servicing and minimising costs of spares. All B series pumps are fitted with a non return valve in the suction port, eliminating the need for a foot valve in suction line and allowing quick priming.

#### Design features

- Basic, reliable technology
- Large solids handling capacity
- Suitable for use with hot fluids
- Wet self-priming
- Cooled shaft seal
- Extended life due to pump design

#### Fields of application

- Shipping
- Industry
- Construction
- Waste water management
- Emergency pump units
- Irrigation
- Agriculture

### Complete package designed & built by BBA Pumps

- Complete in-house design & production
- Over 60 years of experience in the market
- Extensive testing facility in-house
- Contemporary & functional design
- Durable & eco-friendly materials
- Custom builds available

### After sales service & product support

- Single supplier for parts, spares & accessories
- Dedicated customer help-desk (24h service)
- Dedicated service department in-house
- Global parts distribution network
- Optional global on-site servicing
- Extensive training options available (technical & commercial), on-site or in-house

# BE160 Diesel Driven

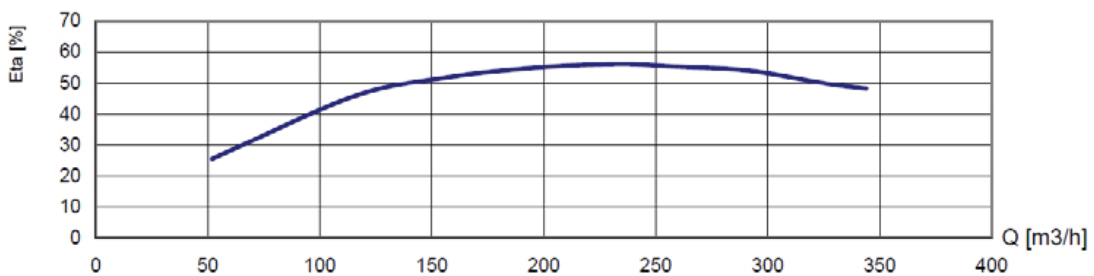
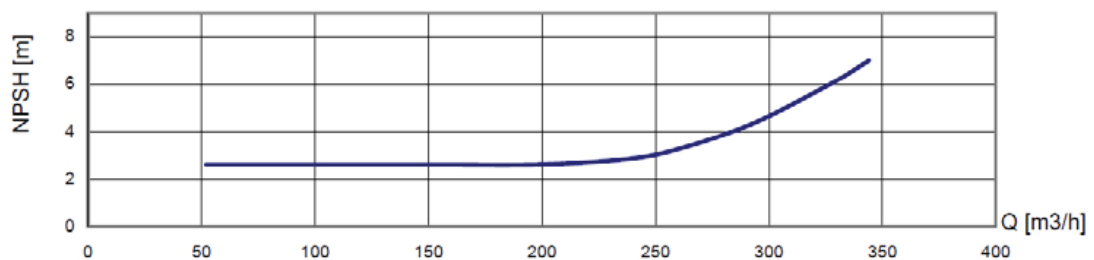
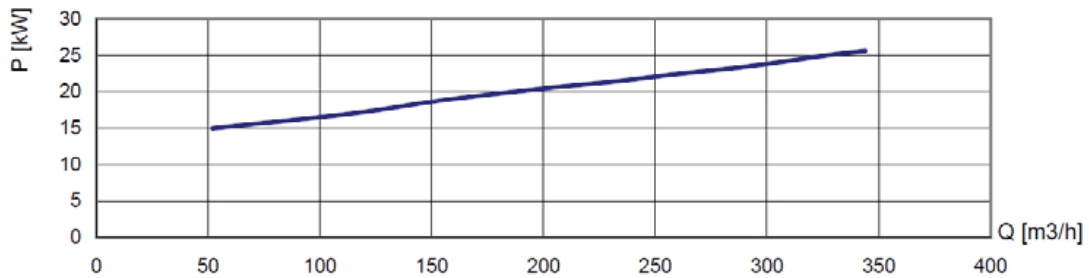
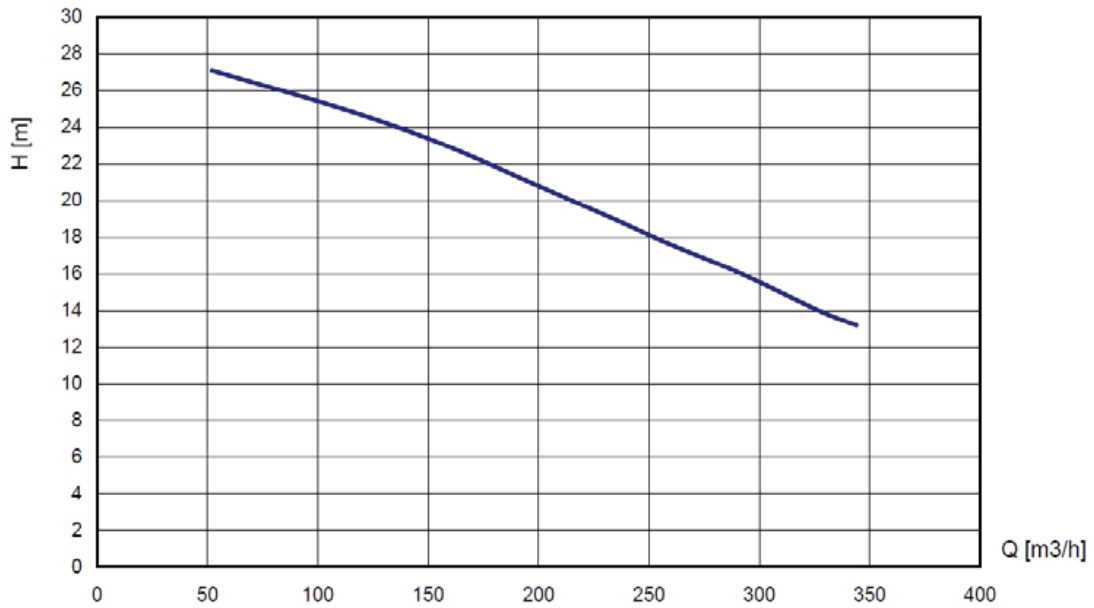
Self-Priming Centrifugal Pump

Max. 345 m<sup>3</sup>/hour, Max. 27 mwc



## PERFORMANCE CURVES (1800 RPM)

Continuous duty according ISO 9906



# BE160 Diesel Driven

## Self-Priming Centrifugal Pump

Max. 345 m<sup>3</sup>/hour, Max. 27 mwc



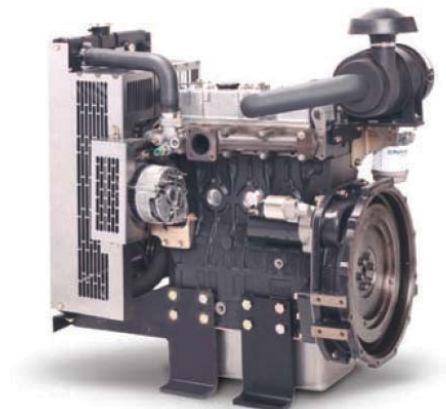
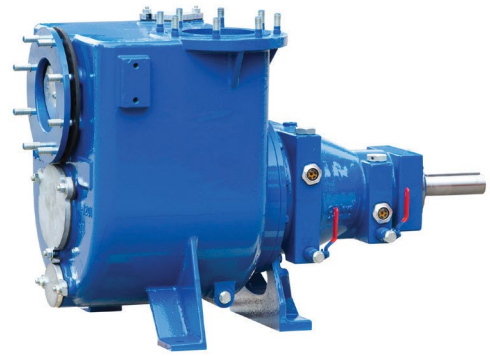
### STANDARD TECHNICAL SPECIFICATIONS

#### BBA self-priming pump

<b>Pump type</b>	BE160 D254
<b>Max. flow</b>	345 m <sup>3</sup> /hour (1518 US GPM)
<b>Max. head</b>	27 mwc (89 feet)
<b>Impeller type</b>	Semi-open impeller
<b>Solids handling</b>	80 mm (3.15 inch)
<b>Pump casing</b>	Cast iron GG20
<b>Impeller</b>	Cast iron GG20
<b>Wear plate</b>	Cast iron GG20
<b>Pump shaft</b>	C45
<b>Shaft seal</b>	Mechanical seal 45 mm (1.77 inch)
<b>Seal faces</b>	Tung/Tung
<b>O-ring</b>	Viton

#### Engine

<b>Engine brand</b>	Perkins
<b>Engine type</b>	404D-22
<b>Flywheel power</b>	26 kW (35 Hp)
<b>Max. engine speed</b>	1500 – 1800 RPM
<b>Fuel consumption</b>	243 g/kWh
<b>Displacement</b>	2.2 l
<b>Number of cylinders</b>	4
<b>Cooling system</b>	Water cooled
<b>Exhaust emission EU</b>	Stage IIIB
<b>Exhaust emission US</b>	Tier 4i



#### BBA control panel

- Composite panel IP66
- Key switch
- Tachometer
- Hour counter
- Warning light "engine failure"
- Warning light "alternator"

#### Fuel system

- PE fuel tank 140 L. net (37 US Gallon)
- Fuel tank cap Ø 60 mm
- Mechanical fuel injection system
- Fitted with water separator & extra in-line fuel filter

#### Electrical system & safety features

- Nominal voltage 12 Volt
- Premium quality battery 92 amp.
- Low oil pressure shut down
- High temperature shut down

# BE160 Diesel Driven

## Self-Priming Centrifugal Pump

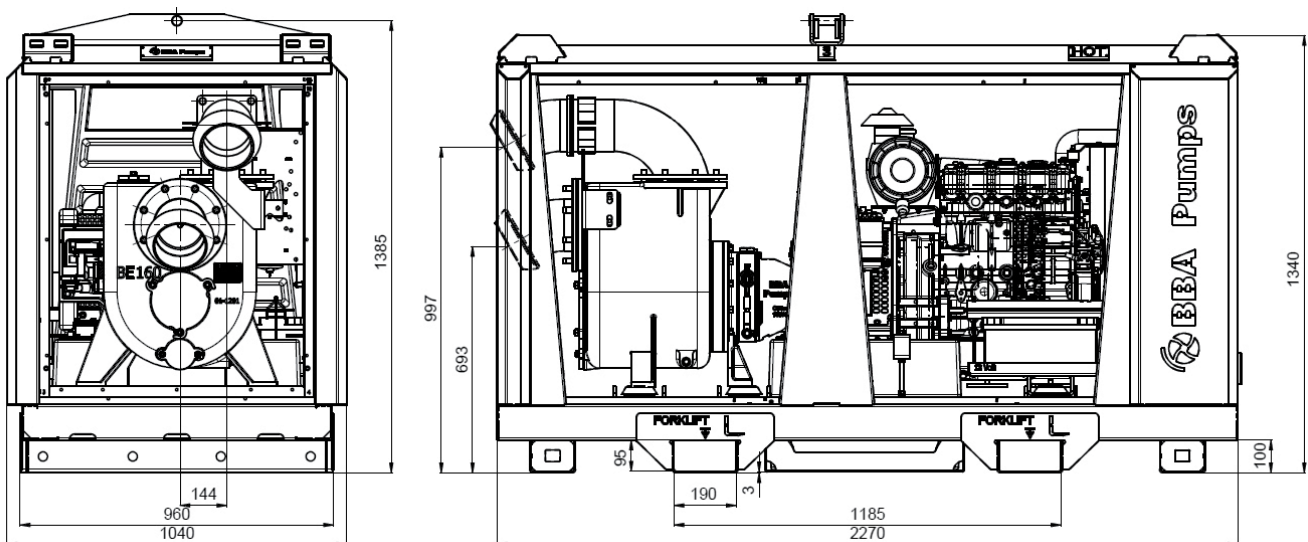
Max. 345 m<sup>3</sup>/hour, Max. 27 mwc



### FRAME BF10-23

#### BBA open diesel unit

<b>Frame model</b>	BF10-23
<b>Dimensions L x W x H</b>	Approx. 2270 x 1040 x 1340 mm (without connections)
<b>Dimensions L x W x H</b>	Approx. 89 x 41 x 53 inch (without connections)
<b>Basic frame</b>	Hot dip galvanised
<b>Panel</b>	Composite grill panel
<b>Fuel tank</b>	Composite tank net 140 ltr (37 US Gallon)
<b>Fuel tank autonomy</b>	20 hours (at 1800 rpm BEP)
<b>Fuel tank cap</b>	60 mm (2.5 inch)
<b>Forklift pockets</b>	Fitted with 2 forklift pockets
<b>Lifting point</b>	Fitted with single lifting point
<b>Connections</b>	Please consult "auxiliary items"
<b>Exhaust system</b>	Exhaust is mounted on the engine
<b>Radiator</b>	Genuine Perkins
<b>Document box</b>	Including genuine BBA user manual & BBA warranty book

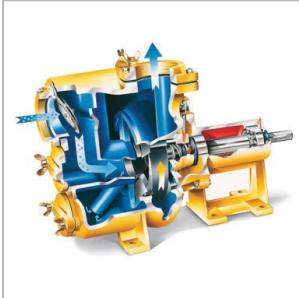


Actual dimensions (in mm and inches) may vary depending on selected quick couplings.

# BE160 Diesel Driven

## Self-Priming Centrifugal Pump

Max. 345 m<sup>3</sup>/hour, Max. 27 mwc



### Excellent priming

The built-in non-return valve at the suction side prevents the pump casing from being siphoned empty when the pump stops. In this way, some liquid will always remain in the pump casing.



### Fuel tank

Corrosion-free, 140 litre, high-density polyethylene (HDPE) fuel tank, located in base of frame.



### Easy inspection

Oil glasses, drain valves and fill plugs are all easily accessible.



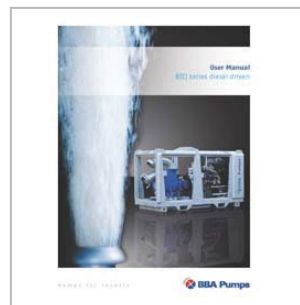
### Large inspection covers

Easy access to impeller and non-return valve. And for filling the casing after the wintertime.



### 4 Year limited warranty

The BBA limited warranty covers years or operating hours whichever occurs first. For more details please consult the BBA warranty book.



### User Manual B(E) series

Extensive user manual with important information concerning the pump unit, pump installation and safety warnings. Available in 7 languages.